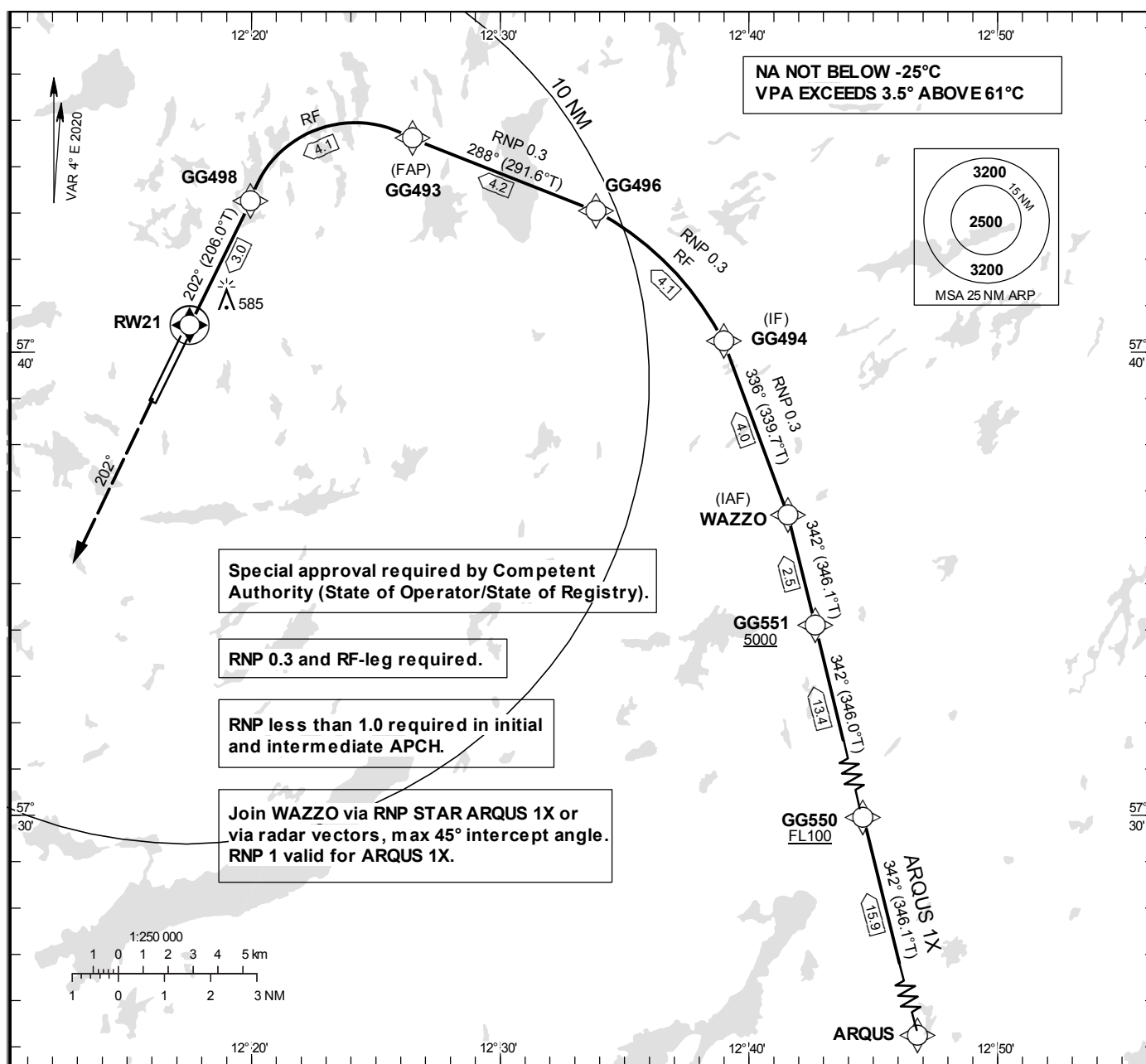


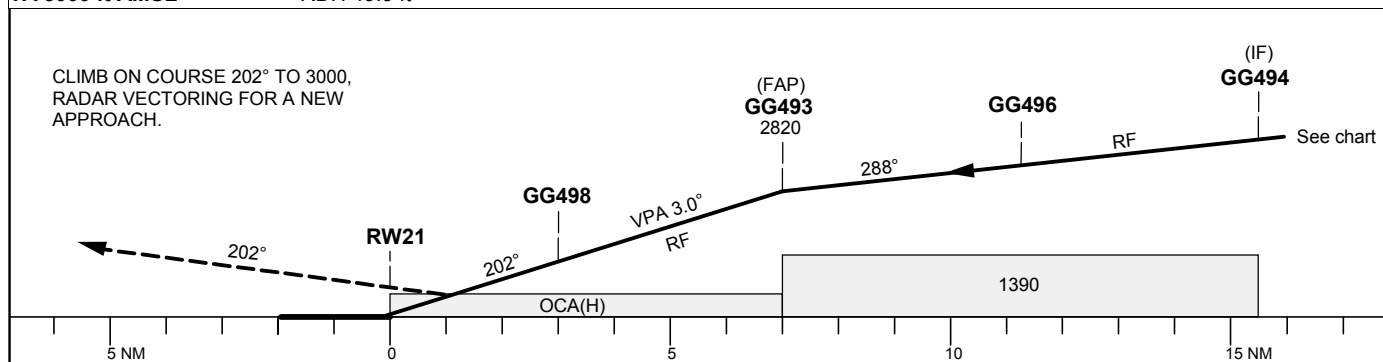
INSTRUMENT APPROACH CHART – ICAO

THR ELEV 506.4 ft, AD ELEV 507 ft
OCH are related to THR.
BRG are MAG (True).
ALT, HGT and ELEV in ft.

LANDVETTER TOWER	118.605
LANDVETTER ATIS	118.380
GÖTEBORG APPROACH	124.680



TA 5000 ft AMSL	RDH 49.9 ft
-----------------	-------------



OCA (H)												
Cat of ACFT	A	B	C	D	Dist to RW21	NM	7	6	5	4	3	2
RNP 0.3	835(329)				ALT	ft	2785	2467	2148	1830	1512	1193

GÖTEBORG/Landvetter

RNP STAR RWY 21 – ARQUS 1X

Path Term	Waypoint Identifier	Fly-over	Course °M(°T)	Dist (NM)	Turn Dir	Altitude	Speed (kts)	VPA/ RDH (°/ft)	Rec Navaid	Navigation Specification
IF	ARQUS	-	-	-	-	-	-	-	-	RNP 1.0
TF	GG550	-	342°(346.1°)	15.9	-	+FL100	-	-	-	RNP 1.0
TF	GG551	-	342° (346.0°)	13.4	-	+5000	-	-	-	RNP 1.0
TF	WAZZO	-	342° (346.1°)	2.5	-	-	-	-	-	RNP 1.0

WPT sequence: ARQUS – GG550 (FL100 or above) – GG551 (5000 or above) – WAZZO.

RNP y RWY 21 (AR)

Path Term	Waypoint Identifier	Fly-over	Course °M(°T)	Dist (NM)	Turn Dir	Altitude	Speed (kts)	VPA/ RDH (°/ft)	ARC Radius NM	ARC centre	Navigation Spec
IF	WAZZO	-	-	-	-	-	-	-	-	-	RNP 0.3
TF	GG494	-	336°(339.7°)	4.0	-	-	-	-	-	-	RNP 0.3
RF	GG496	-	-	4.1	L	-	-	-	4.860	GG998	RNP 0.3
TF	GG493	-	288° (291.6°)	4.2	-	@2820	-	-	-	-	RNP 0.3
RF	GG498	-	-	4.1	L	-	-	-3.00	2.768	GG999	RNP 0.3
TF	RW21	Y	202° (206.0°)	3.0	-	@556	-	-3.00/50	-	-	RNP 0.3
CA	-	-	202° (206.0°)	-	-	+3000	-	-	-	-	RNP APCH
VM	-	-	202°	-	-	@3000	-	-	-	-	RNP APCH